

## TOLEDO, OHIO

### OPERATIONS:

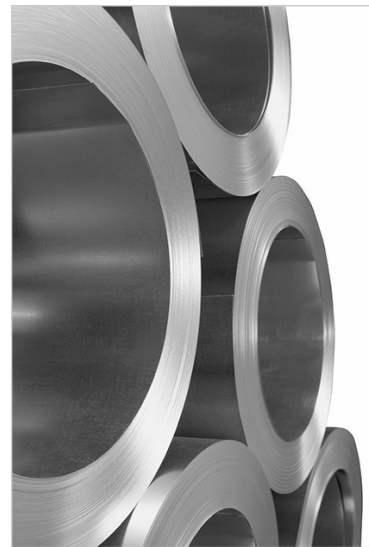
- 4 slitters with capacity from .015 - .250" up to 80" wide
- 120,000 sq. ft. building
- Located just minutes away from I-75, US 23 & I80/90 corridor



### LIFTING CAPABILITIES:

- 60,000 lbs max lift OHC
- 15,000 lbs max lift tow motors
- 5 bays with 2 cranes per each bay: With 10 cranes, we have the flexibility to move material in multiple bays simultaneously

Contact us for detailed information about our slitting and inspection capabilities



OVERVIEW



### SAMUEL DORAL STEEL

1500 Coining Drive, Toledo, Ohio, 43612, **Phone: (419) 470-7070**, Fax: (419) 470-7040, [sales@doralsteel.com](mailto:sales@doralsteel.com)