

Quality Management System

*Having been assessed in accordance with the requirements of the Samuel, Son & Co. Inc. Quality Management System Criteria as outlined in the Samuel, Son and Co. Ltd Corporate Quality Management System Policy Manual: **

Samuel Son & Co., Inc.
2641 W. 17th Street,
Erie, Pennsylvania.
16505 USA

Has been determined to have in place an effective Quality Management System which meets the above criteria with the following scope:

Metal processing and distribution company that holds stock of aluminum, copper, brass, stainless steel and carbon products in coil, sheet, plate, bar, pipe and tube form.

T.R. Stevens, Vice-President, Quality Assurance

Samuel Corporate/ Divisional Internal Quality Lead Auditor

Date of Original Compliance: **June 16th, 2009**

Date of Current Compliance: **June 16th, 2009**

Certificate Expiry Date: **June 16th, 2012**

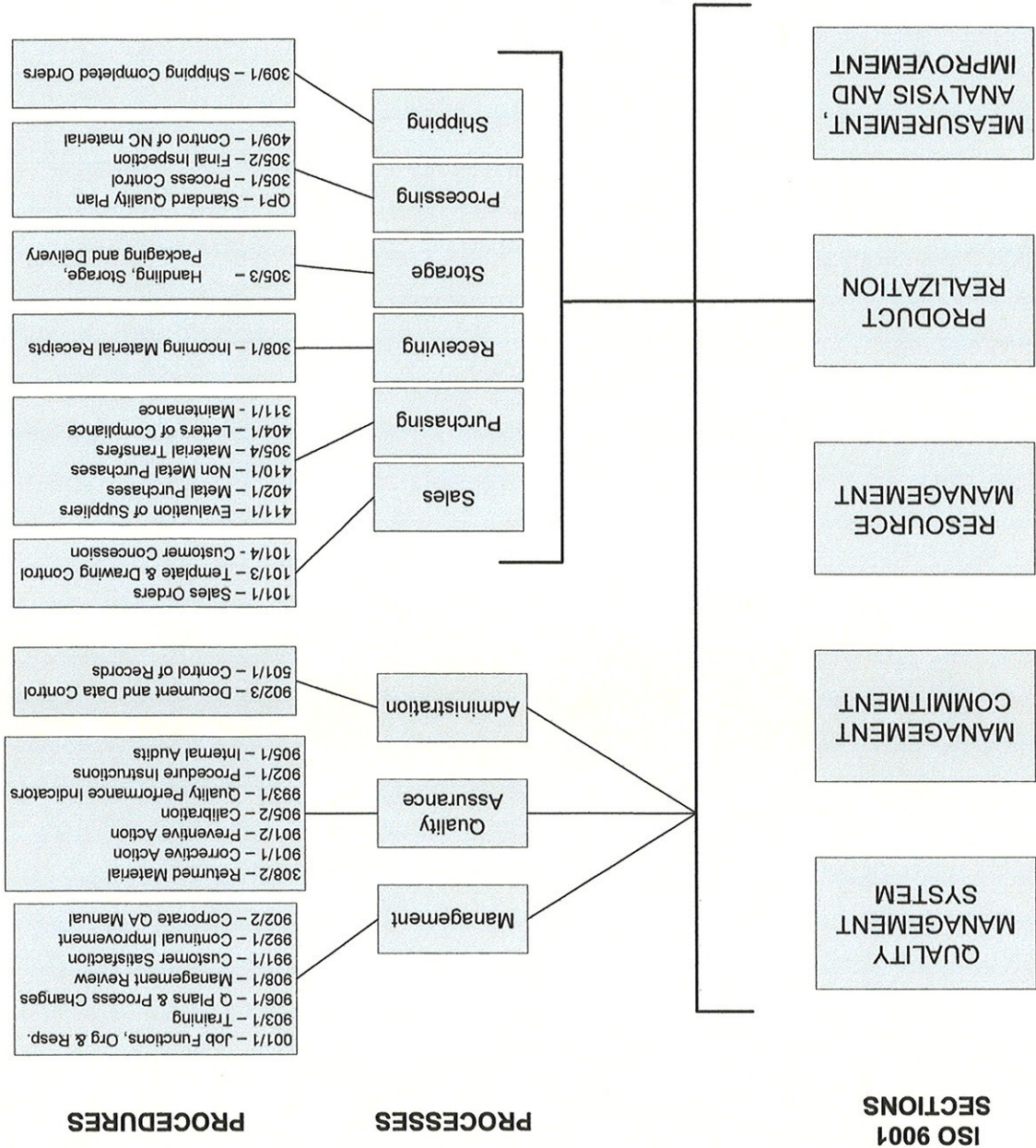
*See attached for outline of compatibility with ISO 9001-2008

Samuel Son & Co., Inc. 2641 W. 17th Street, Erie, Pennsylvania has been audited internally to the Samuel Son & Co. Inc. Internal Quality Management System. This System, which is outlined in the Samuel Son & Co limited Corporate Quality Management System Policy Manual is based on and meets or exceeds the requirements of the ISO 9001-2008 Quality Standard.

The following scope applies to this location:

Metal processing and distribution company that holds stock of aluminum, copper, brass, stainless steel and carbon products in coil, sheet, plate, bar, pipe and tube form.

The Quality Management System is comprised of a Corporate Quality Management System Policy Manual and documented division-specific procedures, work instructions and control plans as applicable. It has been implemented and judged to be effective through the internal audit using the process approach. Each of the processes listed below are comprised of linked activities which enable this organization to function effectively.



Date Approved: June 18th, 2009

Internal Auditor: *James A. Grant*