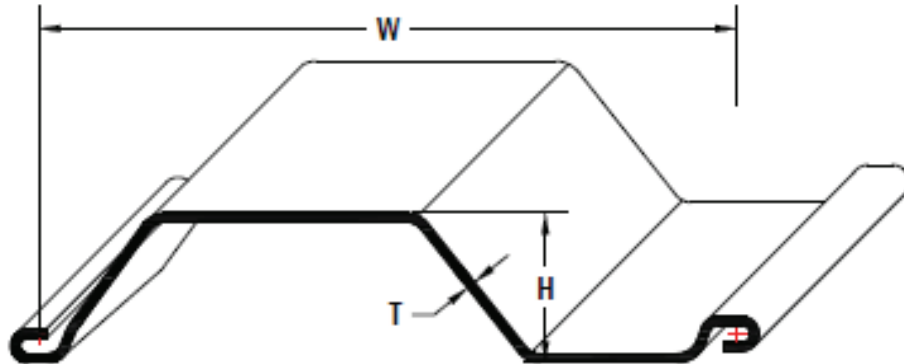


# L SERIES STEEL SHEET PILING

ASTM A857 GRADE 36 STEEL



Section	Thickness in (mm)	Height in (mm)	Nominal Width in (mm)	Cross Sectional Area in <sup>2</sup> (cm <sup>2</sup> )	Pile Weight lbs/lin ft. (kg/lin m)	Wall Weight lbs/ft <sup>2</sup> (kg/m <sup>2</sup> )	Moment of Inertia in <sup>4</sup> /wall ft (cm <sup>4</sup> /wall m)	Section Modulus in <sup>3</sup> /wall ft (cm <sup>3</sup> /wall m)	Coating Area Both Sides ft <sup>2</sup> /ft m <sup>2</sup> /m
<b>L34</b>	0.134 (3.4)	4.10 (104)	19.7 (500)	3.58 (23.1)	12.5 (18.6)	7.62 (37.2)	5.89 (806)	2.77 (149)	4.20 (1.28)
<b>L41</b>	0.164 (4.1)	4.12 (105)	19.7 (500)	4.39 (28.3)	15.0 (22.4)	9.17 (44.7)	7.02 (961)	3.30 (178)	4.20 (1.28)
<b>L45</b>	0.177 (4.5)	4.13 (105)	19.7 (500)	4.74 (30.6)	16.2 (24.1)	9.90 (48.1)	7.69 (1050)	3.62 (195)	4.20 (1.28)
<b>L50</b>	0.197 (5.0)	4.15 (106)	19.7 (500)	5.29 (34.1)	18.9 (28.2)	11.5 (56.3)	9.82 (1340)	4.14 (223)	4.20 (1.28)
<b>L60</b>	0.236 (6.0)	4.18 (106)	19.7 (500)	6.37 (41.1)	22.3 (33.1)	13.6 (66.1)	11.8 (1610)	4.97 (268)	4.20 (1.28)
<b>L65</b>	0.256 (6.5)	4.20 (107)	19.7 (500)	6.90 (44.5)	24.1 (35.8)	14.7 (71.6)	12.8 (1750)	5.38 (290)	4.20 (1.28)