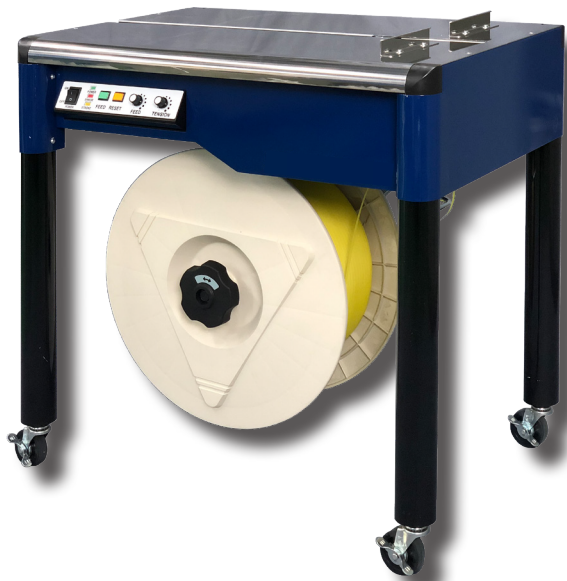


# MODEL iQ-400

## Semi-Automatic Strapping Machine

Introducing the iQ-400, a semi-automatic strapping machine with dual tension mode. This allows for a wide variety of applications with just a flick of a switch.



- The iQ-400 is a durable and heavy-duty strapping machine designed to withstand various harsh environments.
- The iQ-400 is yet amazingly quiet to operate and well suited for office use also.
- The iQ-400 has less moving parts, which makes it easy to maintain and keeps the operation cost low.
- All electric parts are arranged in one side of the machine, enclosed in the cabinet, for easy maintenance and protection of crucial parts.
- The iQ-400 runs strap from 5 millimeters to 15.5 millimeters (5/8 inches) without additional parts.
- The torque tension mode is suitable for stronger tension or to strap compressible packages, while the stroke tension mode is best for soft tension or quick operation.
- Tool-free access to frequently accessed areas for easy maintenance.

## iQ-400

<b>Dimension</b>	<b>Width</b>	780 mm	30-3/4 in.
	<b>Height</b>	775 mm(with work guide)	30-1/2 in.(with work guide)
	<b>Depth</b>	540 mm	21-1/4 in.
	<b>Weight</b>	45 kg.	99 lbs.
<b>Table Height</b>		750 mm	29-1/2 in.
<b>Min. Package Size</b>		W 100 X H 30 mm	W 3-1/8 X H 1-1/8 in.
<b>Joint / Strap/ Coil</b>		heat seal / polypropylene ID 200 or 230 X W 200 mm	heat seal / polypropylene 8 X 8 or 9 X 8 in.
<b>Strap Width / Thickness</b>		5, 6,9,12 (15.5) mm /0.45-0.7mm	1/4,3/8,1/2 (5/8) in./ 0.017-0.027 in.
<b>*Strap Tension</b>		*Max. 450N (45.9 kgf) or 150mm stroke	*Max. 101 lbsf. or 5-7/8 in. stroke
<b>Power Supply</b>		100-120, 200-240 V 1 Phase 50 / 60 Hz 0.35 kW	

Dimensions and specifications are subject to change without notice.  
Modification rights reserved.

**DISTRIBUTED BY:**

packaging@samuel.com  
www.samuelpsg.com

**YOUR SUCCESS IS OUR BUSINESS**

**U.S.A: 800-323-4424**  
**Canada: 800-607-8727**

**SAMUEL**  
1855  
PACKAGING SYSTEMS GROUP